



Photo credits: BEUMER Group GmbH & Co. KG

The new system loads the urea fertiliser fast and reliably onto ships in the port of Bintulu.

PERFECT TIMING



Heinrich Beintmann, Senior Project Manager, BEUMER Group

Since the 1980s, Asean Bintulu Fertilizer (ABF), a subsidiary of the leading Chemical manufacturer in Southeast Asia, Petronas Chemicals Group Berhad, has a production location for carbamide fertiliser (urea) in the Malaysian coastal city of Bintulu (Sarawak) on the island of Borneo. To meet growing demands, BEUMER Group was contracted to modernise and increase the performance of the plant between the longitudinal stockyard and the ship loading system. The scheduling was very streamlined.

Carbamide, also known as urea, is currently the most widely used nitrogen fertiliser in agricultural industries worldwide, mainly due to its comparably low costs. The demand is continuously increasing due to our growing global population. The manufacturing plant in the coastal town of Bintulu on the Malaysian island of Borneo has been one of the biggest of its kind in Asia for many years. It is operated by Asean Bintulu Fertilizer Snd. Bhd., a subsidiary of Petronas Chemicals Group Berhad (PCG).

PCG is one of the largest manufacturers of chemical products in Southeast Asia and the leading producer in Malaysia. 25 companies are part of the group, offering

a wide range of chemical products, such as olefins, polymers, methanol and fertilisers, which are urea-based for example. Their customers are based in about 30 different countries. The most important markets include Malaysia, China, India, Thailand, Indonesia, Japan, South Korea, Taiwan, the Philippines, Vietnam, Singapore, Australia and New Zealand.

To meet the growing demand for urea, Asean Bintulu had to increase the capacity of its export facilities. BEUMER Group was awarded with the contract as a general contractor, and in a consortium with the PBJV Group Sdn Bhd from Malaysia, who took over the assembly of the system. The service provider from Malaysia is responsible for the transport

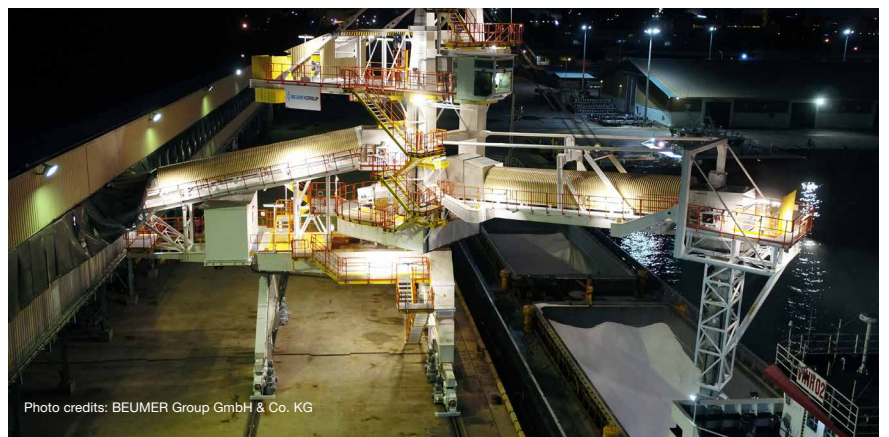


Photo credits: BEUMER Group GmbH & Co. KG

It is in operation 24/7 hours at the port.



Shiploader before starting into operation

and installation of onshore and offshore pipelines, in addition to other activities. The company also equips ships for their respective jobs in the oil and gas industries.

COMPELLING ENGINEERING AND TIME MANAGEMENT

This order was a brownfield project. This means that BEUMER Group had to integrate the new systems into the existing ones in a way that ensured that the material flow from the longitudinal stockyard to the ship was not interrupted. Another requirement was that the already available hardware and software components from third-party suppliers needed to be updated to match the increased performance. The maintenance of the entire system will become a lot easier thanks to this modernisation, because all components are on the same technical standard. BEUMER Group, in cooperation with PBJV Group, developed a technical solution which they presented to ABF together with a schedule that met all the required milestones. Asean Bintulu

Fertilizer was convinced by the system provider's hard work over the course of the proposal phase.

ABF's production location is running 24/7. To minimise the downtime, BEUMER Group had only 55 days scheduled to complete the entire integration, which was quite a challenge. BEUMER Group took over project management and engineering, supplied all the systems and supervised installation and commissioning.

The scope of supply included a portal reclaimer for 600 tonnes per hour (t/h), the ship loader for 1,000 t/h, a fully automatic tripper conveyor for filling the longitudinal stockpile, a mimic panel to comfortably monitor and control the system, the adjustment of the motor control units, a substation, a transfer station with a capacity of 1,000 t/h and a screening station, the most critical element in the schedule. The system supplier installed a solution with a capacity of 2 x 500 t/h. BEUMER Group had to disassemble the existing screening station down to the main supports of the

“BEUMER GROUP HAD TO INTEGRATE THE NEW SYSTEMS INTO THE EXISTING ONES IN A WAY THAT ENSURED THAT THE MATERIAL FLOW TO THE SHIP WAS NOT INTERRUPTED”

building and provide it with entirely new technology.

The transfer station divides the material flow towards ship loading and truck loading. This allows the customer to load either ships or trucks or both at the same time. The assembly of the portal reclaimer and ship loader was less time-critical, because the team could start working on it already prior to the 55-day shutdown, before the production plant was closed down. The assembly of the portal reclaimer in the longitudinal stockpile offered an entirely different challenge. The low ceiling height made it impossible to assemble the reclaimer on the floor and then set it up. The system supplier had to find another solution: here they had to assemble segment by segment. Challenging and time consuming.

BEUMER and PBJV were up for the challenge, and, in close cooperation, developed installation drawings and procedures for each work package, in compliance with the strict safety requirements of all parties involved.



The portal reclaimer removes the bulk material in layers from the side slopes and transports it through a primary crusher to a belt conveyor at a capacity of 600 t/h.

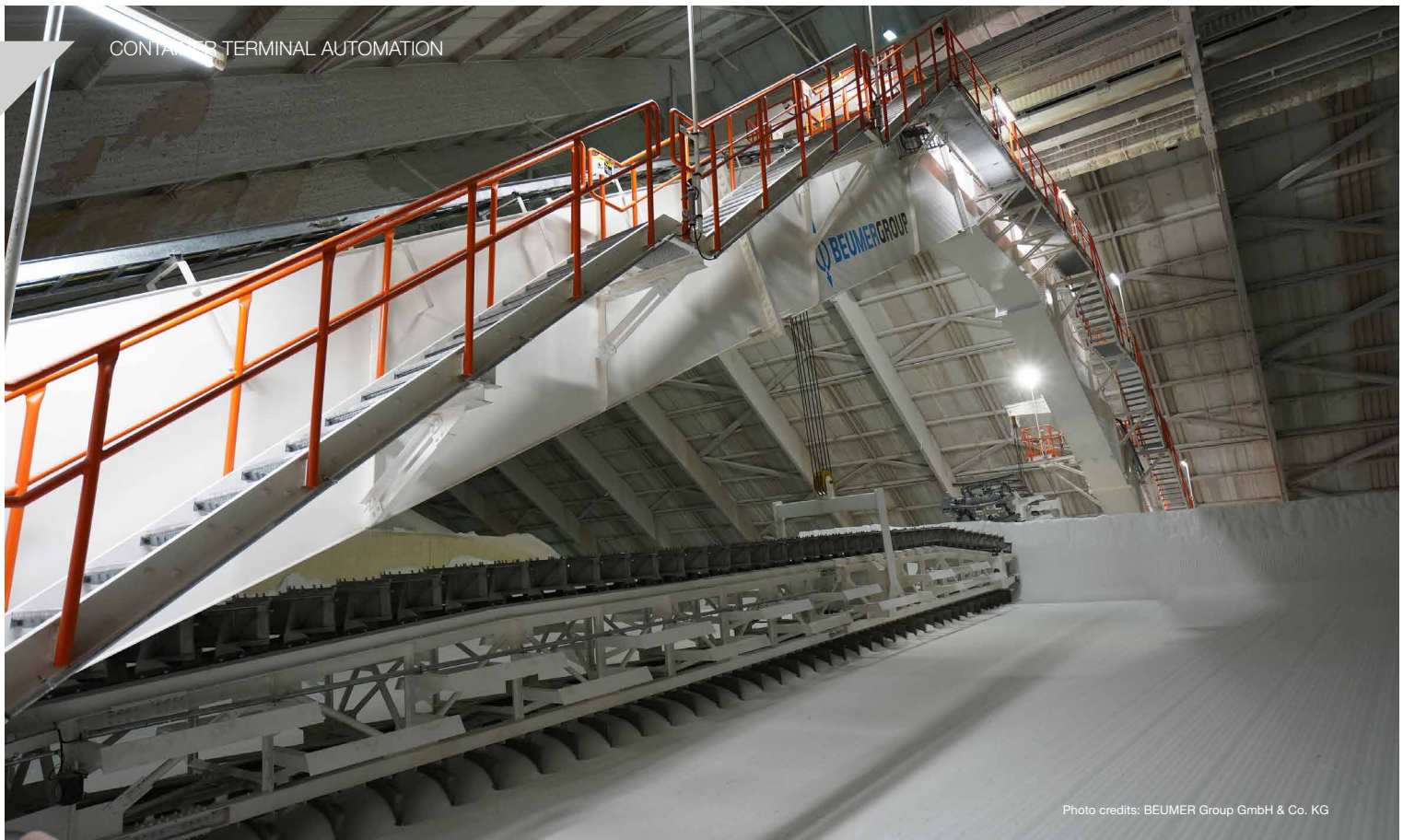


Photo credits: BEUMER Group GmbH & Co. KG

The portal reclaimer is fully automated.

“BEUMER CONTINUOUSLY DEVELOPS NOT ONLY ITS OWN PRODUCTS FURTHER, BUT ITS CUSTOMER SUPPORT TAKES CARE OF UPGRADING MECHANICAL AND CONTROL TECHNOLOGY MANUFACTURED BY THIRD-PARTIES.”

ADAPTED TO THE PERFORMANCE REQUIREMENTS

The portal reclaimer traverses the longitudinal stockpile with the urea fertiliser, removes the bulk material in layers from the side slopes and transports it through a primary crusher to a belt conveyor at a capacity of 600 t/h. The portal reclaimer is fully automated. An existing side reclaimer adds another 400 t/h from a second longitudinal stockpile into the system.

The existing belt conveyor systems were not designed for the higher performance of the new portal reclaimer. Which meant that the system provider had to upgrade the drive stations already in place. No problem for the system supplier: all systems used by the customer should seamlessly interlock.

BEUMER continuously develops not only its own products further, but its Customer Support takes care of upgrading mechanical and control technology manufactured by third-parties. The client is very satisfied with the conversion concept, as the aim is to preserve already

existing structures as far as possible. This helps companies to reduce their costs, by reducing the number of necessary components and ensuring fast return on investment. Adding shorter installation and handover times was also particularly important with this project.

EFFICIENT SHIP LOADING

Belt conveyors transport the urea over the screening and transfer stations to the new ship loader, also supplied by BEUMER Group. The mobile and swivel-mounted ship loader has a telescopic chute and a throw-off belt conveyor to make loading as efficient and flexible as possible. With this system, the customer can now load ships with 1,000 t/h.

Petronas and Asean Bintulu Fertilizer are completely satisfied with the solutions, the progression of the project and the work of the BEUMER and PBJV consortium. The commissioning for the ship loader took less than three weeks, the entire system was completely commissioned after eight weeks and handed over to the operator.

ABOUT THE AUTHOR

Heinrich Beintmann has been with the BEUMER Group since July 2011. As a Project Engineer, he took over the sales of curved overland conveyor systems. Afterwards he became Project Manager for conveying and loading systems. Since June 2017 he is Senior Project Manager.

ABOUT THE ORGANISATION

BEUMER Group is an international leader in the manufacture of intralogistics systems for conveying, loading, palletising, packaging, sortation, and distribution. With 4,500 employees worldwide, BEUMER Group has annual sales of about €950 million. BEUMER Group and its group companies and sales agencies provide their customers with high-quality system solutions and an extensive customer support network.